

KOHL®



INTEGRATED LOUVRE

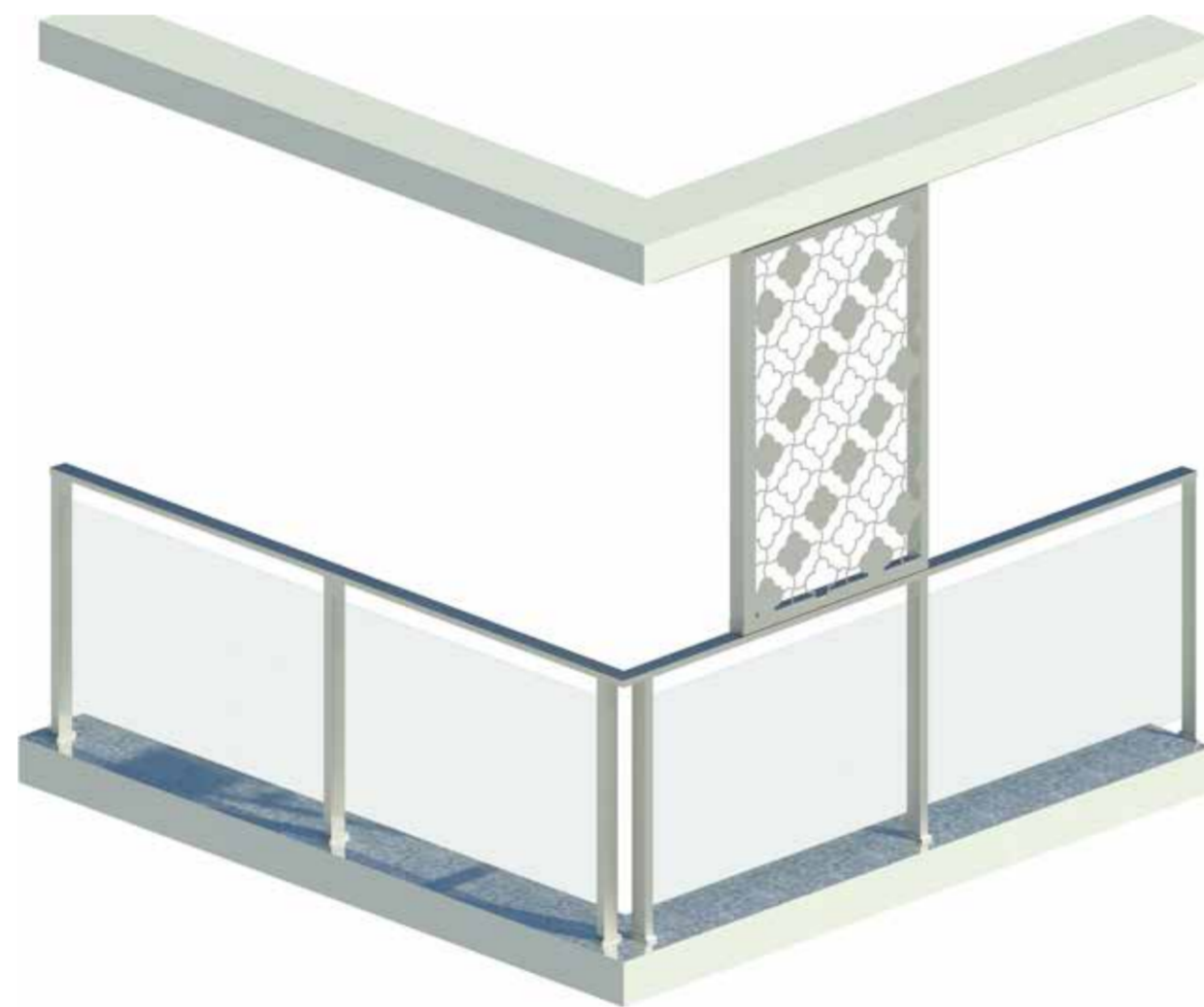
Semi Frameless balustrade from the MEDITERRANEAN series.

diversity with style

INTEGRATED LOUVRE

Give your building a modern and functional facade with this combined louvre and semi frameless balustrade, without compromising on space or style.

An **Integrated Louvre** System enables cutting edge space saving design while providing elegant UV protection.



Complete Single System

Engineered to any design requirements: Concealed fixings and slimline footplate creates a subtle yet strong aluminium design.

Customise to suit your project

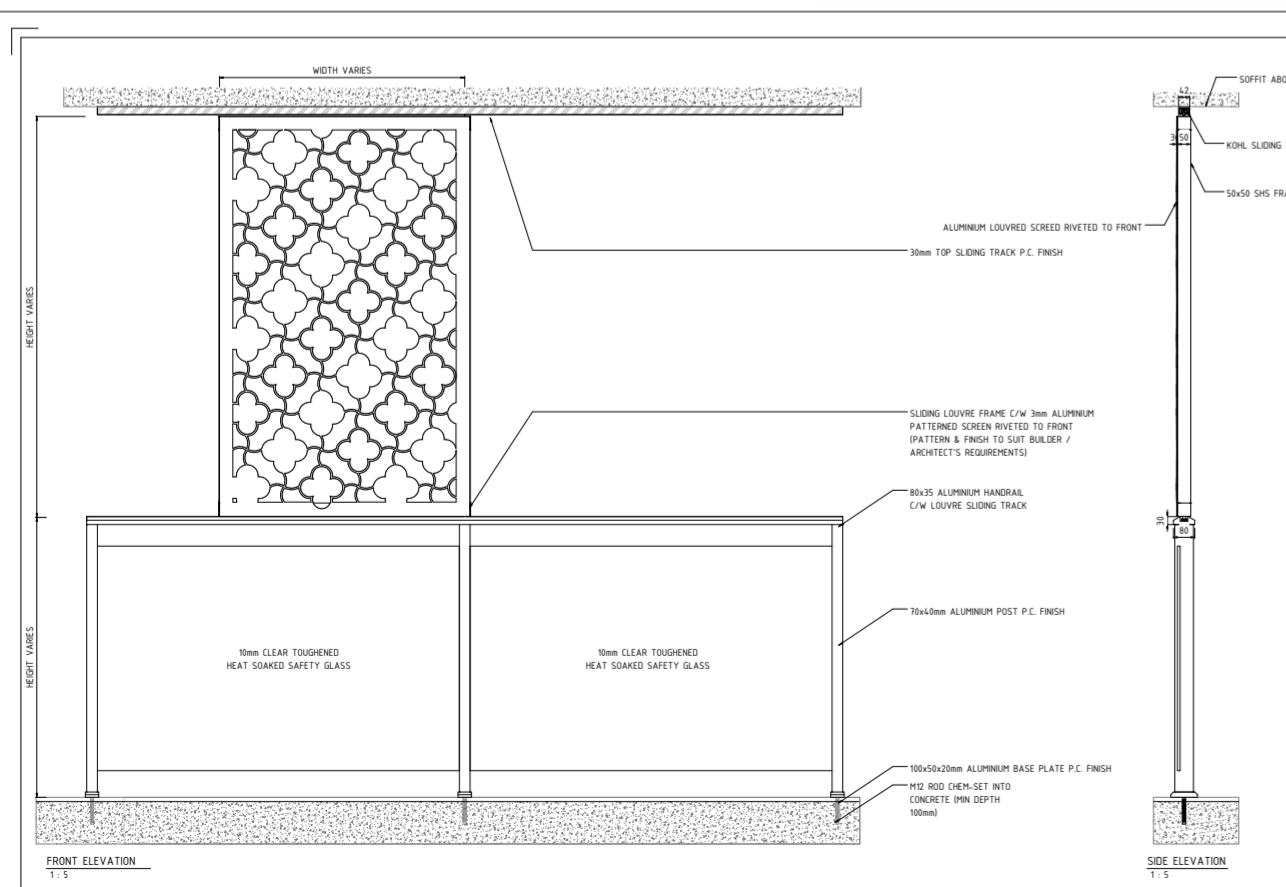
Louvre Design, Frame powder coated or anodized Aluminium finish, System width and Glass type.

Sleek Features

Semi frameless balustrade: Tailored 10mm clear toughened glass, flushline glazing and integrated top rail sliding screen or louvre.

Exceptional Safety Rating

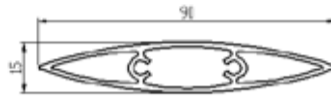
Cyclone rated: Engineered to Terrain 2, wind region D and Exceeds Australian Building standards and BCA requirements.



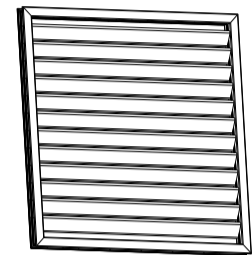
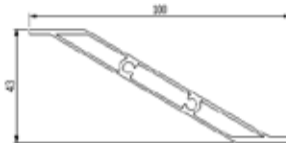
Customise: Louvre Design.

Choose from our timeless and sleek range or ask for a tailored design for your unique project.

Elliptical



Slatted



Patterned -Tile



Patterned- Dotted



Bi Fold

The Mediterranean Series

The Terrace

The Terrace offers a blend of structure and weightlessness with its timeless, crafted frame.



The Beach

The beach is defined by an offset handrail for uncompromised views with a minimalist flair.



Integrated Louvre

An Integrated Louvre System enables cutting edge space saving design while providing elegant UV protection.



Kohl is an Australian owned and operated company. Servicing the commercial high rise and domestic market, specialising in custom made designs.