

# KOHL®



## SILVER

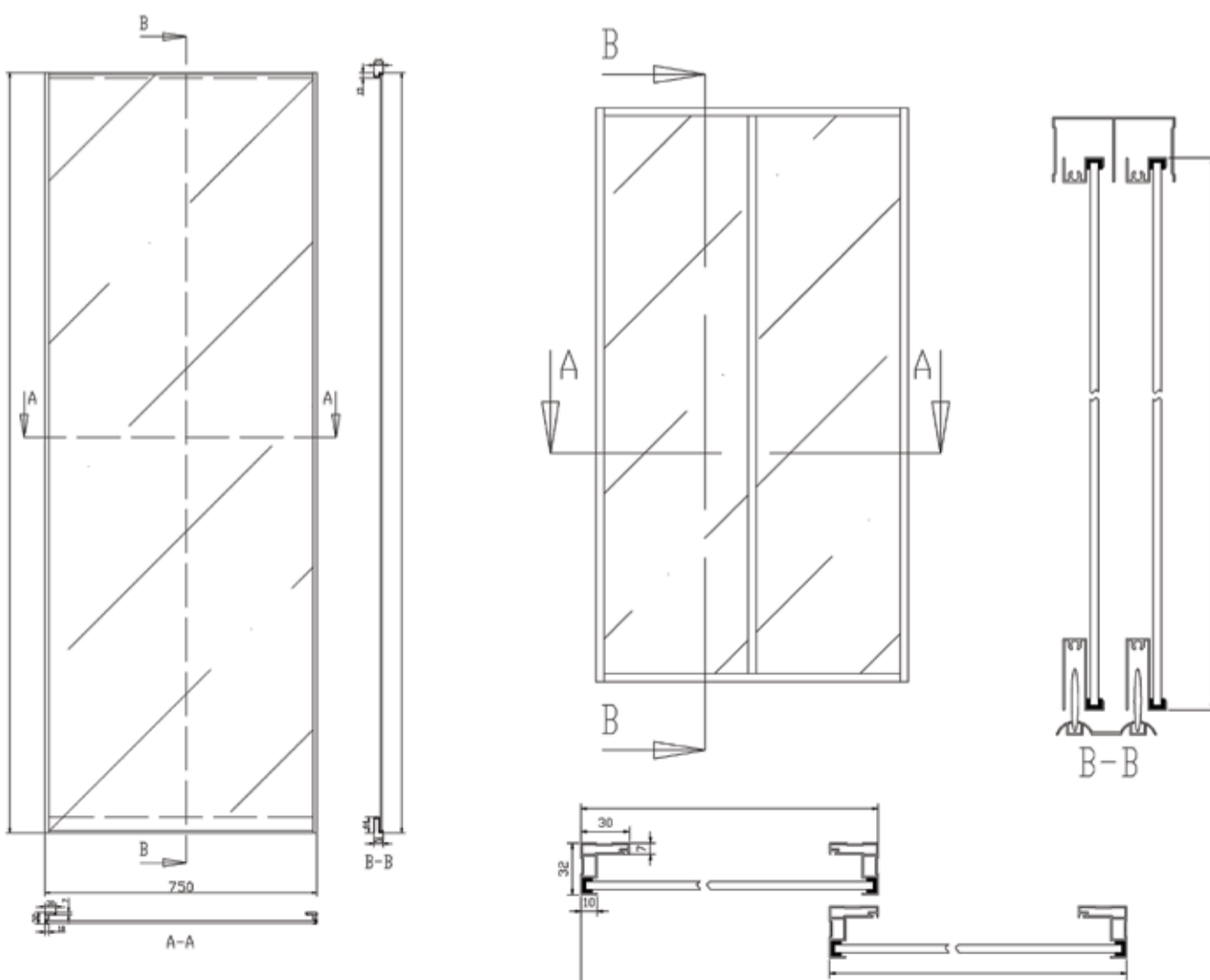
Sliding Wardrobe Doors from the Slimline Series

diversity with style

# SILVER

Give your home that spice of luxury with our range of modern sliding wardrobe door designs.

**Silver** is just one of the contemporary finishes available with our slimline, near frameless robe doors.



## Complete Single System

Engineered to any design requirements: Concealed fixings and engineered rail system creates a subtle yet strong design.

## Customise to suit your project

Stainless finish, system size and glass type.

## Sleek Features

Sliding wardrobe door with advanced track and wheel system, exceptional clarity and surface finish.

## Exceptional Safety Rating

Exceeds Australian Building standards and BCA requirements.



## Customise: Glass Type

Choose from our timeless and sleek range or ask for a tailored design for your unique project.

Clear



Frosted



White Matt Melamine



Bronze



Grey



White Backed



Kohl is an Australian owned and operated company. Servicing the commercial high rise and domestic market, specialising in custom made designs.